

Duration : Three Hours      Maximum Marks : 150

**Question 1- 30 Carry one Mark each.**

**Q1.** The following differential equation has

$$3 \frac{d^2 y}{dt^2} + 4 \left( \frac{dy}{dt} \right)^3 + y^2 + 2 = x$$

- (A) degree = 2, order = 1
- (B) degree = 3, order = 2
- (C) degree = 4, order = 3
- (D) degree = 2, order = 3

**Q2.** Choose the function  $f(t); -\infty < t < \infty$  for which a Fourier series cannot be defined.

- (A)  $3 \sin(25t)$
- (B)  $4 \cos(20t + 3) + 2 \sin(710t)$
- (C)  $e^{-|t|} \sin(25t)$
- (D) 1

**Q3.** A fair dice is rolled twice. The probability that an odd number will follow on even number is

- (A)  $\frac{1}{2}$
- (B)  $\frac{1}{6}$
- (C)  $\frac{1}{3}$
- (D)  $\frac{1}{4}$

**Q4.** A solution of the following differential equation is given by

$$\frac{d^2 y}{dt^2} - 5 \frac{dy}{dt} + 6y = 0$$

- (A)  $y = e^{2x} + e^{-3x}$
- (B)  $y = e^{2x} + e^{3x}$
- (C)  $y = e^{-2x} + e^{-3x}$
- (D)  $y = e^{-2x} + e^{-3x}$

**Q5.** The function  $x(t)$  is shown in the figure. Even and odd parts of a unit step function  $u(t)$  are respectively,

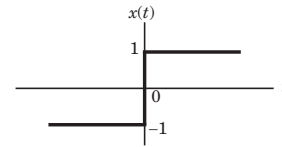


Fig. Q5

- (A)  $\frac{1}{2}, \frac{1}{2} x(t)$
- (B)  $-\frac{1}{2}, \frac{1}{2} x(t)$
- (C)  $\frac{1}{2}, -\frac{1}{2} x(t)$
- (D)  $-\frac{1}{2}, -\frac{1}{2} x(t)$

**Q6.** The region of convergence of  $z$  - transform of the sequence

$$\left( \frac{5}{6} \right)^n u(n) - \left( \frac{6}{5} \right)^n u(-n - 1)$$
 must be

- (A)  $|z| < \frac{5}{6}$
- (B)  $|z| > \frac{5}{6}$
- (C)  $\frac{5}{6} < |z| < \frac{6}{5}$
- (D)  $\frac{6}{5} < |z| < \infty$

**Q7.** The condition on  $R, L$  and  $C$  such that the step response  $y(t)$  in the figure has no oscillations, is

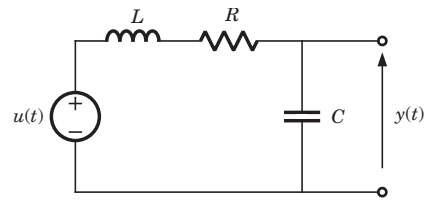


Fig. Q7

- (A)  $R \geq \frac{1}{2} \sqrt{\frac{L}{C}}$
- (B)  $R \geq \sqrt{\frac{L}{C}}$
- (C)  $R \geq 2 \sqrt{\frac{L}{C}}$
- (D)  $R = \sqrt{\frac{1}{LC}}$

**Q8.** The  $ABCD$  parameters of an ideal  $n:1$  transformer shown in the figure are  $\begin{bmatrix} n & 0 \\ 0 & X \end{bmatrix}$ . The value of  $x$  will be

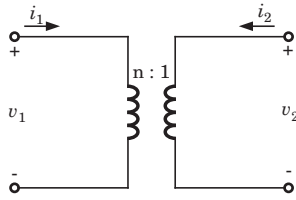


Fig. Q8

- (A)  $n$  (B)  $\frac{1}{n}$   
 (C)  $n^2$  (D)  $\frac{1}{n^2}$

**Q9.** In a series  $RLC$  circuit,  $R = 2 \text{ k}\Omega$ ,  $L = 1 \text{ H}$  and  $C = \frac{1}{400} \mu$ . The resonant frequency is

- (A)  $2 \times 10^4 \text{ Hz}$  (B)  $\frac{1}{\pi} \times 10^4 \text{ Hz}$   
 (C)  $10^4 \text{ Hz}$  (D)  $2\pi \times 10^4 \text{ Hz}$

**Q10.** The maximum power that can be transferred to the load resistor  $R_L$  from the voltage source in the figure is

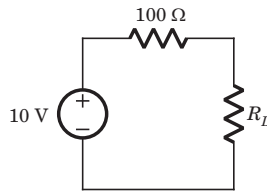


Fig. Q10

- (A) 1 W (B) 10 W  
 (C) 0.25 W (D) 0.5 W

**Q11.** The bandgap of Silicon at room temperature is

- (A) 1.3 eV (B) 0.7 eV  
 (C) 1.1 eV (D) 1.4 eV

**Q12.** A Silicon PN junction at a temperature of  $20^\circ \text{C}$  has a reverse saturation current of 10 pico - Amperes (pA). The reverse saturation current at  $40^\circ \text{C}$  for the same bias is approximately

- (A) 30 pA (B) 40 pA  
 (C) 50 pA (D) 60 pA

**Q13.** The primary reason for the widespread use of Silicon in semiconductor device technology is

- (A) abundance of Silicon on the surface of the Earth.  
 (B) larger bandgap of Silicon in comparison to Germanium.  
 (C) favorable properties of Silicon - dioxide ( $\text{SiO}_2$ )  
 (D) lower melting point.

**Q14.** The effect of current shunt feedback in an amplifier is to

- (A) increase the input resistance and decrease the output resistance.  
 (B) increase both input and output resistance  
 (C) decrease both input and output resistances.  
 (D) decrease the input resistance and increase the output resistance.

**Q15.** The input resistance of the amplifier shown in the figure is

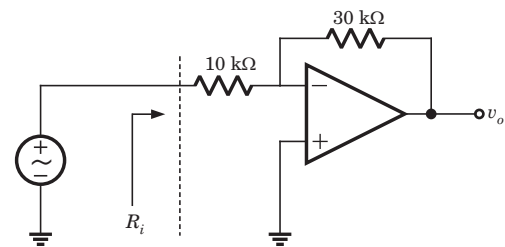


Fig. Q15

- (A)  $\frac{30}{4} \text{ k}\Omega$  (B) 10 k $\Omega$   
 (C) 40 k $\Omega$  (D) infinite

**Q16.** The first and the last critical frequency of an  $RC$  - driving point impedance function must respectively be

- (A) a zero and a pole (B) a zero and a zero  
 (C) a pole and a pole (D) a pole and a zero

**Q17.** The cascode amplifier is a multistage configuration of

- (A) CC - CB (B) CE - CB  
 (C) CB - CC (D) CE - CC

**Q18.** Decimal 43 in Hexadecimal and BCD number system is respectively

- (A) B2, 0100 011 (B) 2B, 0100 0011  
 (C) 2B, 0011 0100 (D) B2, 0100 0100

**Q19.** The Boolean function  $f$  implemented in the figure using two input multiplexes is

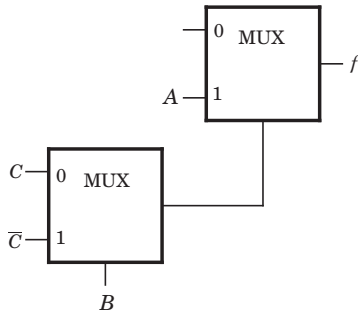
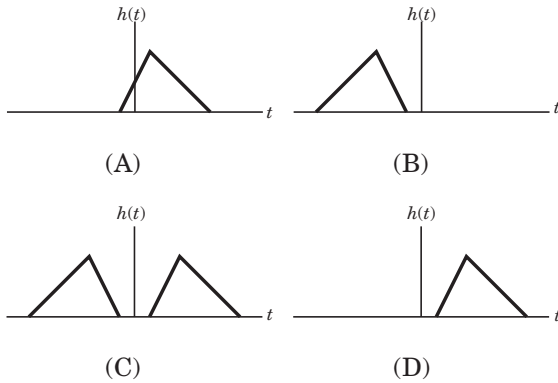


Fig. Q19

- (A)  $\overline{A}BC + A\overline{B}C$
- (B)  $ABC + A\overline{B}C$
- (C)  $\overline{A}BC + \overline{A}B\overline{C}$
- (D)  $\overline{A}BC + \overline{A}B\overline{C}$

**Q20.** Which of the following can be impulse response of a causal system?



**Q21.** Let  $x(n) = \left(\frac{1}{2}\right)^n u(n)$ ,  $y(n) = x^2(n)$  and  $Y(e^{j\omega})$  be the Fourier transform of  $y(n)$  then  $Y(e^{j0})$  is

- (A)  $\frac{1}{4}$
- (B) 2
- (C) 4
- (D)  $\frac{4}{3}$

**Q22.** Find the correct match between group 1 and group 2

- |                                       |                         |
|---------------------------------------|-------------------------|
| Group 1                               | Group II                |
| P. $\{1 + km(t)\} A \sin(\omega_c t)$ | W. Phase Modulation     |
| Q. $km(t)A \sin(\omega_c t)$          | X. Frequency Modulation |
| R. $A \sin(\omega_c t + km(t))$       | Y. Amplitude Modulation |
| (A) P-Z, Q-Y, R-X, S-W                | (B) P-W, Q-X, R-Y, S-Z  |
| (C) P-X, Q-W, R-Z, S-Y                | (D) P-Y, Q-Z, R-W, S-X  |

**Q23.** The power in the signal  $s(t) = 8 \cos\left(20\pi t - \frac{\pi}{2}\right) + 4 \sin(15\pi t)$  is

- (A) 40
- (B) 41
- (C) 42
- (D) 82

**Q24.** Which of the following analog modulation scheme requires the minimum transmitted power and minimum channel bandwidth?

- (A) VSB
- (B) DSB - SC
- (C) SSB
- (D) AM

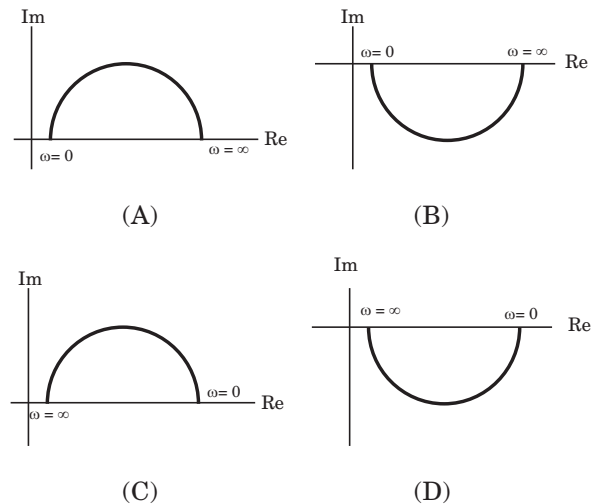
**Q25.** A linear system is equivalently represented by two sets of state equations:

$$\dot{X} = AX + BU \text{ And } \dot{W} = CW + DU$$

The eigenvalues of the representations are also computed as  $[\lambda]$  and  $[\mu]$ . Which one of the following statements is true?

- (A)  $[\lambda] = [\mu]$  and  $X = W$
- (B)  $[\lambda] = [\mu]$  and  $X \neq W$
- (C)  $[\lambda] \neq [\mu]$  and  $X = W$
- (D)  $[\lambda] = [\mu]$  and  $X \neq W$

**Q26.** Which one of the following polar diagrams corresponds to a lag network?



**Q27.** Despite the presence of negative feedback, control systems still have problems of instability because the

- (A) Components used have non-linearities
- (B) Dynamic equations of the subsystem are not known exactly.

- (C) Mathematical analysis involves approximations.  
 (D) System has large negative phase angle at high frequencies.

**Q28.** The magnetic field intensity vector of a plane wave is given by

$$\vec{H}(x, y, z, t) = 10 \sin(50000t + 0.004x + 30) \hat{a}_y$$

where  $\hat{a}_y$ , denotes the unit vector in  $y$  direction .

The wave is propagating with a phase velocity.

- (A)  $5 \times 10^4$  m/s                      (B)  $-3 \times 10^8$  m/s  
 (C)  $-125 \times 10^7$  m/s                (D)  $3 \times 10^8$  m/s

**Q29.** Many circles are drawn in a Smith Chart used for transmission line calculations. The circles shown in the figure represent

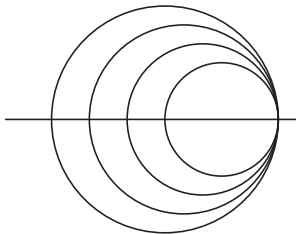


Fig. Q29

- (A) Unit circles  
 (B) Constant resistance circles  
 (C) Constant reactance circles  
 (D) Constant reflection coefficient circles.

**Q30.** Refractive index of glass is 1.5. Find the wavelength of a beam of light with a frequency of 1014 Hz in glass. Assume velocity of light is  $3 \times 10^8$  m/s in vacuum.

- (A) 3  $\mu\text{m}$                                 (B) 5  $\mu\text{m}$   
 (C) 2  $\mu\text{m}$                                 (D) 1  $\mu\text{m}$

**Q31.** In what range should  $\text{Re}(s)$  remain so that the Laplace transform of the function  $e^{(a+2)t+5}$  exist question

- (A)  $\text{Re}(s) > a + 2$                       (B)  $\text{Re}(s) > a + 7$   
 (C)  $\text{Re}(s) < 2$                             (D)  $\text{Re}(s) > a + 5$

**Q32.** Given the matrix  $\begin{bmatrix} -4 & 2 \\ 4 & 3 \end{bmatrix}$  the eigenvector is

- (A)  $\begin{bmatrix} 3 \\ 2 \end{bmatrix}$                                       (B)  $\begin{bmatrix} 4 \\ 3 \end{bmatrix}$   
 (C)  $\begin{bmatrix} 2 \\ -1 \end{bmatrix}$                                       (D)  $\begin{bmatrix} -2 \\ 1 \end{bmatrix}$

**Q33.** Let,  $A = \begin{bmatrix} 2 & -0.1 \\ 0 & 3 \end{bmatrix}$  and  $A^{-1} = \begin{bmatrix} 1/2 & a \\ 0 & b \end{bmatrix}$ . Then

$(a + b) =$

- (A)  $\frac{7}{20}$                                       (B)  $\frac{3}{20}$   
 (C)  $\frac{19}{60}$                                       (D)  $\frac{11}{20}$

**Q34.** The value of the integral  $I = \frac{1}{\sqrt{2\pi}} \int_0^{\infty} e^{-\frac{x^2}{8}} dx$  is

- (A) 1                                        (B)  
 (C) 2                                        (D)2

**Q35.** The derivative of the symmetric function drawn in given figure will look like

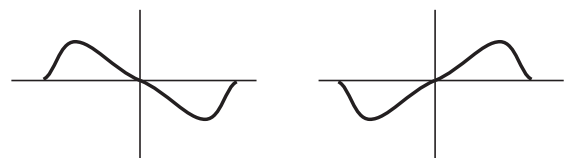


Fig. Q35



(A)

(B)



(C)

(D)

**Q36.** Match the following and choose the correct combination :

#### Group 1

- E. Newton - Raphson Method  
 F. Range - Kutta method  
 G. Simpson's Rule  
 H. Gauss elimination

#### Group 2

1. Solving nonlinear equations  
 2. Solving linear simultaneous equations

- 3. Solving ordinary differential equations
  - 4. Numerical integration
  - 5. Interpolation
  - 6. Calculation of Eigenvalues
- (A) E-6, F-1, G-5, H-3            (B) E-1, F-6, G-4, H-3  
 (C) E-1, F-3, G-4, H-2            (D) E-5, F-3, G-4, H-1

**Q37.** Given an orthogonal matrix

$$A = \begin{bmatrix} 1 & 1 & 1 & 1 \\ 1 & 1 & -1 & -1 \\ 1 & -1 & 0 & 0 \\ 0 & 0 & 1 & -1 \end{bmatrix}, [AA^T]^{-1} \text{ is}$$

- (A)  $\begin{bmatrix} \frac{1}{4} & 0 & 0 & 0 \\ 0 & \frac{1}{4} & 0 & 0 \\ 0 & 0 & \frac{1}{2} & 0 \\ 0 & 0 & 0 & \frac{1}{2} \end{bmatrix}$             (B)  $\begin{bmatrix} \frac{1}{2} & 0 & 0 & 0 \\ 0 & \frac{1}{2} & 0 & 0 \\ 0 & 0 & \frac{1}{2} & 0 \\ 0 & 0 & 0 & \frac{1}{2} \end{bmatrix}$
- (C)  $\begin{bmatrix} 1 & 0 & 0 & 0 \\ 0 & 1 & 0 & 0 \\ 0 & 0 & 1 & 0 \\ 0 & 0 & 0 & 1 \end{bmatrix}$             (D)  $\begin{bmatrix} \frac{1}{4} & 0 & 0 & 0 \\ 0 & \frac{1}{4} & 0 & 0 \\ 0 & 0 & \frac{1}{4} & 0 \\ 0 & 0 & 0 & \frac{1}{4} \end{bmatrix}$

**Q38.** For the circuit show in the figure, the instantaneous current  $i_1(t)$  is

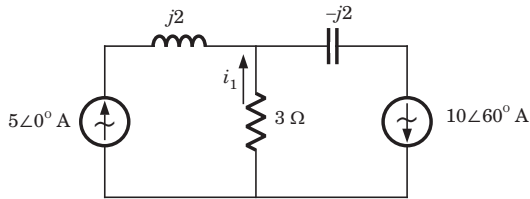


Fig. Q38

- (A)  $\frac{10\sqrt{3}}{2} \angle 90^\circ$  Amps.            (B)  $\frac{10\sqrt{3}}{2} \angle -90^\circ$  Amps.  
 (C)  $5 \angle 60^\circ$  Amps            (D)  $5 \angle -60^\circ$  Amps

**Q39.** Impedance  $Z$  as shown in the given figure is

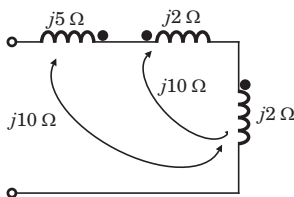


Fig. Q39

- (A)  $j29 \Omega$             (B)  $j9 \Omega$   
 (C)  $j19 \Omega$             (D)  $j39 \Omega$

**Q40.** For the circuit shown in figure, Thevenin's voltage and Thevenin's equivalent resistance at terminals a - b is

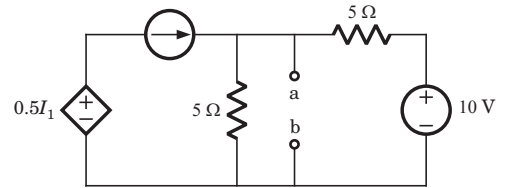


Fig. Q40

- (A) 5 V and 2 Ω            (B) 7.5 V and 2.5 Ω  
 (C) 4 V and 2 Ω            (D) 3 V and 2.5 Ω

**Q41.** If  $R_1 = R_2 = R_3 = R$  and  $R_4 = 1.1R$  in the bridge circuit shown in the figure, then the reading in the ideal voltmeter connected between a and b is

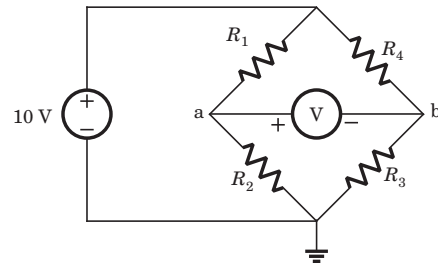


Fig. Q41

- (A) 0.238 V            (B) 0.138 V  
 (C) -0.238 V            (D) 1 V.

**Q42.** The  $h$  parameters of the circuit shown in the figure are

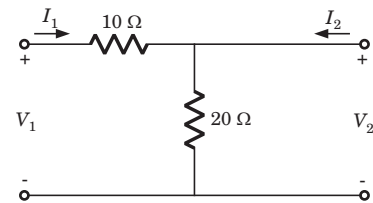
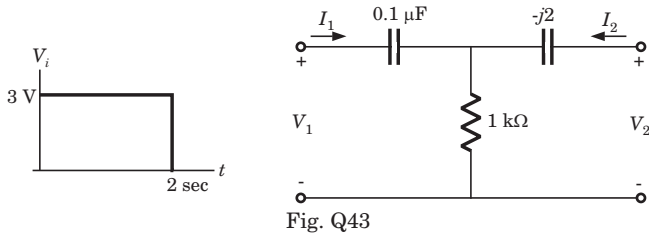


Fig. Q42

- (A)  $\begin{bmatrix} 0.1 & 0.1 \\ -0.1 & 0.3 \end{bmatrix}$             (B)  $\begin{bmatrix} 10 & -1 \\ 1 & 0.05 \end{bmatrix}$   
 (C)  $\begin{bmatrix} 30 & 20 \\ 20 & 20 \end{bmatrix}$             (D)  $\begin{bmatrix} 10 & 1 \\ -1 & 0.05 \end{bmatrix}$

**Q43.** A square pulse of 3 volts amplitude is applied to C-R circuit shown in the figure. The capacitor is initially uncharged. The output voltage  $V_o$  at time  $t = 2$  sec is



- (A) 3 V
- (B) -3 V
- (C) 4 V
- (D) -4 V

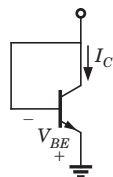
**Q44.** A Silicon sample A is doped with  $10^{18}$  atoms/cm<sup>3</sup> of boron. Another sample b of identical dimension is doped with  $10^{18}$  atoms/cm<sup>3</sup> phosphorus. The ratio of electron to hole mobility is 3. The ratio of conductivity of the sample A to B is

- (A) 3
- (B)  $\frac{1}{3}$
- (C)  $\frac{2}{3}$
- (D)  $\frac{3}{2}$

**Q45.** A Silicon PN junction diode under reverse bias has depletion region of width 10 μm. The relative permittivity of Silicon,  $\epsilon_r = 11.7$  and the permittivity of free space  $\epsilon_0 = 8.85 \times 10^{-12}$  F/m. The depletion capacitance of the diode per square meter is

- (A) 100 μF
- (B) 10 μF
- (C) 1 μF
- (D) 20 μF

**Q46.** For an npn transistor connected as shown in figure  $V_{BE} = 0.7$  volts. Given that reverse saturation current of the junction at room temperature 300 K is  $10^{-13}$  A, the emitter current is



- (A) 30 mA
- (B) 39 mA
- (C) 49 mA
- (D) 20 mA

**Q47.** The voltage  $e_o$  is indicated in the figure has been measured by an ideal voltmeter. Which of the following can be calculated ?

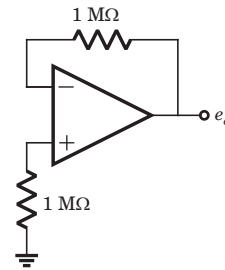


Fig. Q47

- (A) Bias current of the inverting input only
- (B) Bias current of the inverting and non-inverting inputs only
- (C) Input offset current only
- (D) Both the bias currents and the input offset current.

**Q48.** The OP-amp circuit shown in the figure is filter. The type of filter and its cut. Off frequency are respectively.

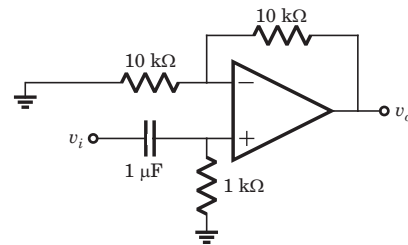


Fig. Q48

- (A) high pass, 1000 rad/sec.
- (B) Low pass, 1000 rad/sec.
- (C) high pass, 1000 rad/sec.
- (D) low pass, 10000 rad/sec.

**Q49.** In an ideal differential amplifier shown in the figure, a large value of ( $R_E$ )

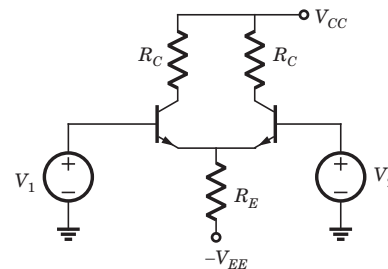
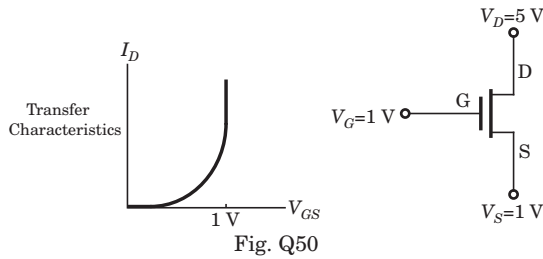


Fig. Q49

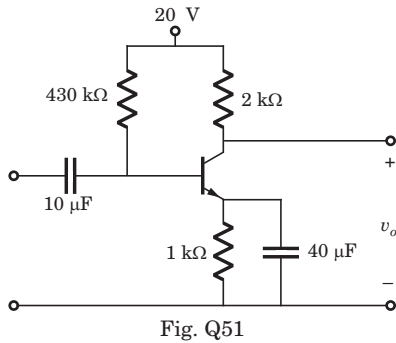
- (A) increase both the differential and common - mode gains
- (B) increases the common mode gain only
- (C) decreases the differential mode gain only
- (D) decreases the common mode gain only.

**Q50.** For an n-channel MOSFET and its transfer curve shown in the figure, the threshold voltage is



- (A) 1 V and the device is in active region
- (B) -1 V and the device is in saturation region
- (C) 1 V and the device is in saturation region
- (D) -1 V and the device is in active region.

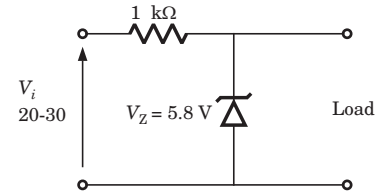
**Q51.** The circuit using a BJT with  $\beta = 50$  and  $V_{BE} = 0.7$  V is shown in the figure. The base current  $I_B$  and collector voltage by  $V_C$  and respectively



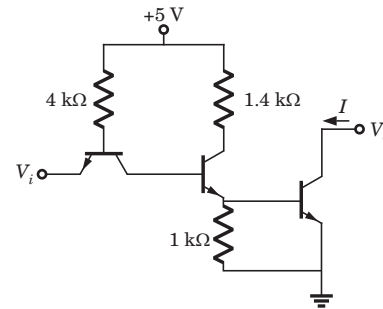
- (A) 43 A and 11.4 Volts
- (B) 40 A and 16 Volts
- (C) 45 A and 11 Volts
- (D) 50 A and 10 Volts

**Q52.** The zener diode in the regulator circuit shown in the figure has a Zener voltage of 5.8 volts and a zener knee current of 0.5 mA. The maximum load current drawn from this current ensuring proper functioning over the input voltage range between 20 and 30 volts, is

- (A) 23.7 mA
- (B) 14.2 mA.
- (C) 13.7 mA.
- (D) 24.2 mA.



**Q53.** The transistors used in a portion of the TTL gate show in the figure have  $\beta = 100$ . The base emitter voltage of is 0.7 V for a transistor in active region and 0.75 V for a transistor in saturation. If the sink current  $I = 1$  A and the output is at logic 0, then the current  $I_R$  will be equal to



- (A) 0.65 mA
- (B) 0.70 mA
- (C) 0.75 mA
- (D) 1.00 mA

**Q54.** The Boolean expression for the truth table shown is

A	B	C	D
0	0	0	0
0	0	1	0
0	1	0	0
0	1	1	1
1	0	0	0
1	0	1	0
1	1	0	1
1	1	1	0

- (A)  $B(A + C)(\bar{A} + \bar{C})$
- (B)  $B(A + \bar{C})(\bar{A} + C)$
- (C)  $\bar{B}(A + \bar{C})(\bar{A} + C)$
- (D)  $\bar{B}(A + C)(\bar{A} + \bar{C})$

**Q55.** Both transistors  $T_1$  and  $T_2$  show in the figure, have a  $\beta = 100$ , threshold voltage of 1 Volts. The device parameters  $K_1$  and  $K_2$  of  $T_1$  and  $T_2$  are, respectively,  $36 \mu\text{A}/\text{V}^2$  and  $9 \mu\text{A}/\text{V}^2$ . The output voltage  $V_o$  is

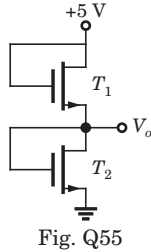


Fig. Q55

- (A) 1 V
- (B) 2 V
- (C) 3 V
- (D) 4 V

**Q56.** The present output  $Q_n$  of an edge triggered JK flip - flop is logic 0. If  $J = 1$ , then  $Q_{n+1}$

- (A) Cannot be determined
- (B) Will be logic 0
- (C) will be logic 1
- (D) will rave around

**Q57.** The given figure shows a ripple counter using positive edge triggered flip-flops. If the present state of the counter is  $Q_2Q_1Q_0 = 001$  then its next state  $Q_2Q_1Q_0$  will be

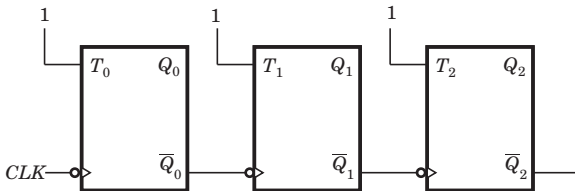


Fig. Q57

- (A) 010
- (B) 111
- (C) 100
- (D) 101

**Q58.** What memory address range is NOT represents by chip # 1 and chip # 2 in the figure  $A_0$  to  $A_{15}$  in this figure are the address lines and CS means chip select.

- (A) 0100 - 02FF.
- (B) 1500 - 16FF
- (C) F900-FAFF
- (D) F800 - F9FF

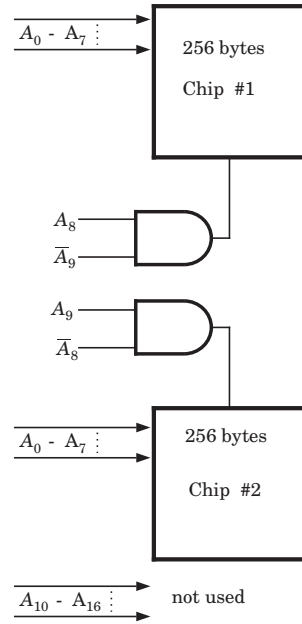


Fig. Q58

**Q59.** The output  $y(t)$  of a linear time invariant system is related to its input  $x(t)$  by the following equation

$$y(t) = 0.5x(t - t_d + T) + x(t - t_d) + 0.5x(t - t_d + T)$$

The filter transfer function  $H(\omega)$  of such a system is given by

- (A)  $(1 + \cos \omega T)e^{-j\omega t_d}$
- (B)  $(1 + 0.5 \cos \omega T)e^{-j\omega t_d}$
- (C)  $(1 - \cos \omega T)e^{-j\omega t_d}$
- (D)  $(1 - 0.5 \cos \omega T)e^{-j\omega t_d}$

**Q60.** Match the following and choose the correct combination.

**Group 1**

- E. Continuous and periodic signal
- F. Continuous and periodic signal
- G. Discrete and aperiodic signal
- H. Discrete and periodic signal

**Group 2**

1. Fourier representation is continuous and aperiodic
2. Fourier representation is discrete and aperiodic
3. Fourier representation is continuous
4. Fourier representation is discrete and periodic

- (A) E-3, F-2, G-4, H-1
- (B) E-1, F-3, G-2, H-4
- (C) E-1, F-2, G-3, H-4
- (D) E-2, F-1, G-4, H-3

**Q61.** A signal  $x(n) = \sin(\omega_0 n + \phi)$  is the input to a linear time- invariant system having a frequency response



$H(e^{j\omega})$ . If the output of the system  $Ax(n - n_0)$  then the most general form of will be

- (A)  $-n_0\omega_0 + \beta$  for any arbitrary real
- (B)  $-n_0\omega_0 + 2\pi k$  for any arbitrary interder  $k$
- (C)  $n_0\omega_0 + 2\pi k$  for any arbitrary interder  $k$
- (D)  $-n_0\omega_0\phi$

**Q62.** For a signal the Fourier transform is  $X(f)$ . Then the inverse Fourier transform of  $X(3f + 2)$  is given by

- (A)  $\frac{1}{2} x\left(\frac{t}{2}\right) e^{j3\pi t}$
- (B)  $\frac{1}{3} x\left(\frac{t}{3}\right) e^{-\frac{j4\pi t}{3}}$
- (C)  $3x(3t)e^{-j4\pi t}$
- (D)  $x(3t + 2)$

**Q63.** The polar diagram of a conditionally stable system for open loop gain  $K = 1$  is shown in the figure. The open loop transfer function of the system is known to be stable. The closed loop system is stable for

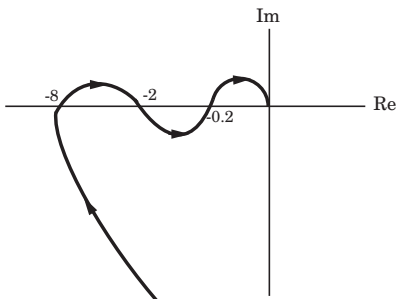


Fig. Q63

- (A)  $K < 5$  and  $\frac{1}{2} < K < \frac{1}{8}$
- (B)  $K < \frac{1}{8}$  and  $\frac{1}{2} < K < 5$
- (C)  $K < \frac{1}{8}$  and  $5 < K$
- (D)  $K > \frac{1}{8}$  and  $5 > K$

**Q64.** In the derivation of expression for peak percent overshoot

$$M_p = \exp\left(\frac{-\pi\zeta}{\sqrt{1-\zeta^2}}\right) \times 100\%$$

Which one of the following conditions is NOT required?

- (A) System is linear and time invariant
- (B) The system transfer function has a pair of complex conjugate poles and no zeroes.
- (C) There is no transportation delay in the system.
- (D) The system has zero initial conditions.

**Q65.** Given the ideal operational amplifier circuit shown in the figure indicate the correct transfer characteristics assuming ideal diodes with zero cut-in voltage.

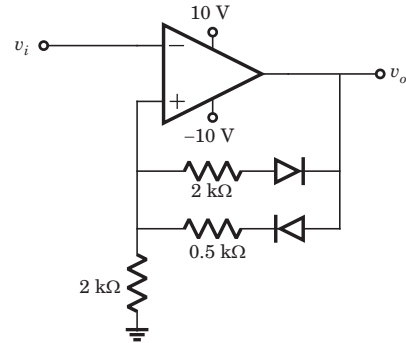
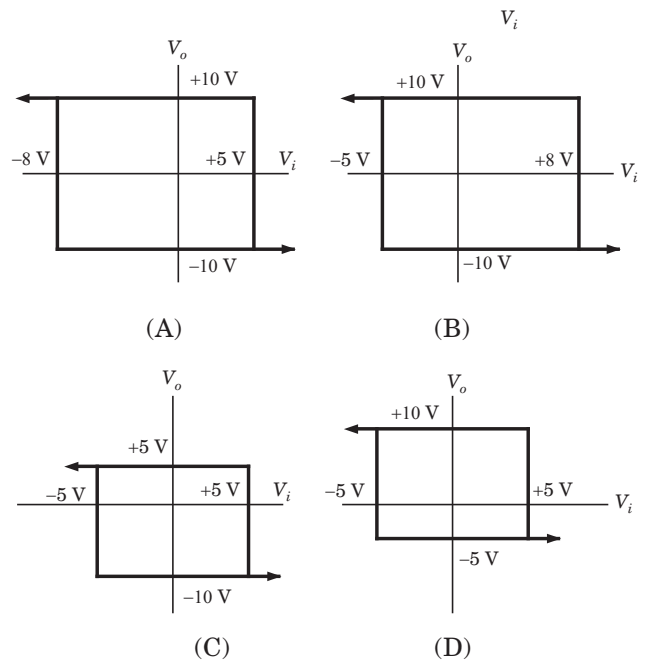


Fig. Q65



**Q66.** A ramp input applied to an unity feedback system results in 5% steady state error. The type number and zero frequency gain of the system are respectively

- (A) 1 and 20
- (B) 0 and 20
- (C) 0 and  $\frac{1}{20}$
- (D) 1 and  $\frac{1}{20}$

**Q67.** A double integrator plant  $G(s) = K/s^2$ ,  $H(s) = 1$  is to be compensated to achieve the damping ratio and undamped natural frequency,  $\omega = 5$  rad/s which one of the following compensator  $G_c(s)$  will be suitable?

- (A)  $\frac{s + 3}{s + 9.9}$
- (B)  $\frac{s + 9.9}{s + 3}$

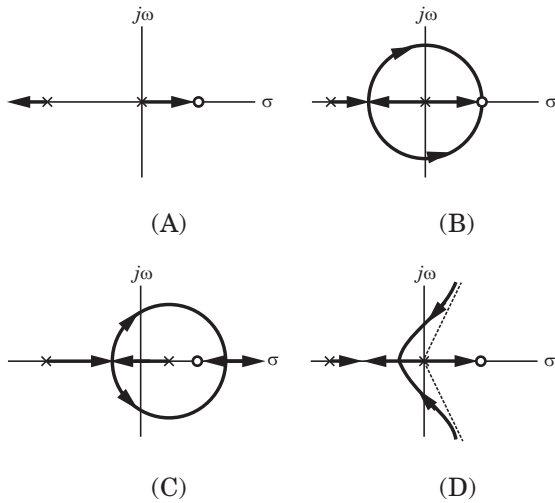
(C)  $\frac{s - 6}{s + 8.33}$

(D)  $\frac{s - 6}{s}$

**Q68.** An unity feedback system is given as

$$G(s) = \frac{K(1 - s)}{s(s + 3)}$$

Indicate the correct root locus diagram.



**Q69.** A MOS capacitor made using P type substrate is in the accumulation mode. The dominant charge in the channel is due to the presence of

- (A) holes
- (B) electrons
- (C) positively charged ions
- (D) negatively charged ions

**Q70.** A device with input  $x(t)$  and output  $y(t)$  is characterized  $y(t) = x^2(t)$ . An FM signal with frequency deviation of 90 kHz and modulating signal bandwidth of 5 kHz is applied to this device. The bandwidth of the output signal is

- (A) 370 kHz
- (B) 190 kHz
- (C) 380 kHz
- (D) 95 kHz

**Q71.** A signal as shown in the figure is applied to a matched filter. Which of the following does represent the output of this matched filter?

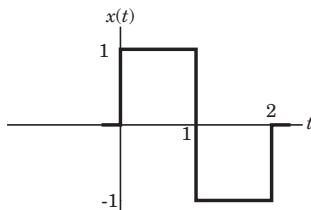
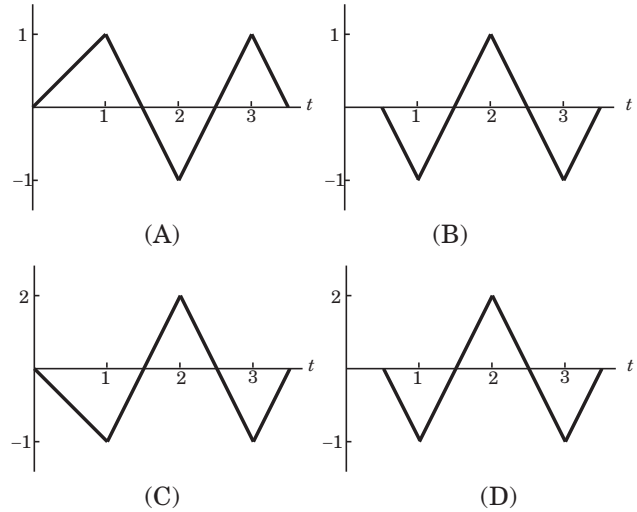


Fig. Q71



**Q72.** Noise with uniform power spectral density of is passed through a filter followed by an ideal low pass filter of bandwidth  $B$  Hz. The output noise power in watts is

- (A)  $2N_0B$
- (B)  $4N_0B$
- (C)  $8N_0B$
- (D)  $16N_0B$

**Q73.** A carrier is phase modulated (PM) with frequency deviation of 10 kHz by a single tone frequency of 1 kHz. If the single tone frequency is increased to 2 kHz, assuming that phase deviation remains unchanged, the bandwidth of the PM signal is

- (A) 21 kHz
- (B) 22 kHz
- (C) 42 kHz
- (D) 44 kHz

**Q74.** An output of a communication channel is a random variable  $v$  with the probability density function as shown in the figure. The mean square value of  $v$  is

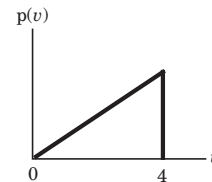


Fig. Q74

- (A) 4
- (B) 6
- (C) 8
- (D) 9

**Q75.** Which one of the following does represent the electric field lines for the mode in the cross-section of a hollow rectangular metallic waveguide?

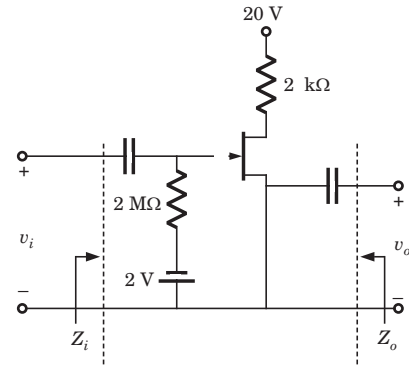
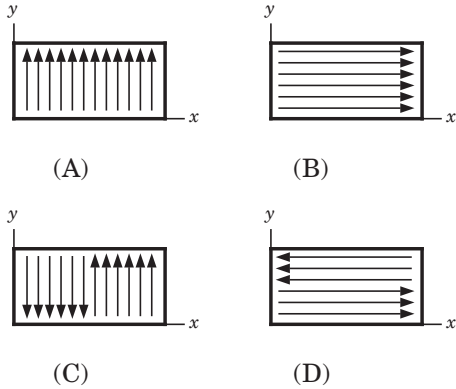
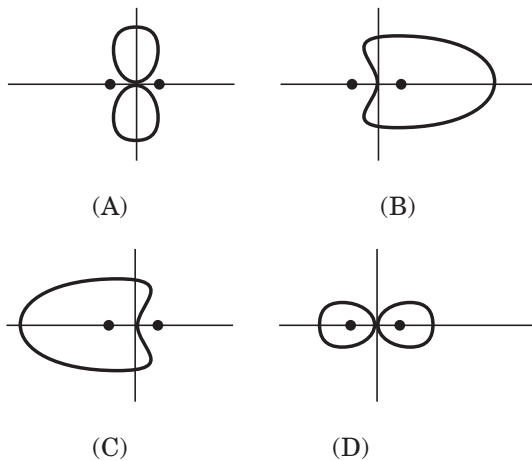


Fig. Q78

**Q76.** Characteristic impedance of a transmission line is  $50 \Omega$ . Input impedance of the open-circuited line when the transmission line is short-circuited, then value of the input impedance will be.

- (A)  $50 \Omega$
- (B)  $100 + j150 \Omega$
- (C)  $7.69 + j11.54 \Omega$
- (D)  $7.69 - j11.54 \Omega$

**Q77.** Two identical and parallel dipole antennas are kept apart by a distance of  $\frac{\lambda}{4}$  in the H - plane. They are fed with equal currents but the right most antenna has a phase shift of  $+ 90^\circ$ . The radiation pattern is given as.



**COMMON DATA QUESTION 78, 79, 80:**

Given,  $r_d = 20 \text{ k}\Omega$ ,  $I_{DSS} = 10 \text{ mA}$ ,  $V_p = -8 \text{ V}$

- Q78.**  $Z_i$  and  $Z_o$  of the circuit are respectively
- (A)  $2 \text{ M}\Omega$  and  $2 \text{ k}\Omega$
  - (B)  $2 \text{ M}\Omega$  and  $\frac{20}{11} \text{ k}\Omega$
  - (C)  $\infty$  and  $2 \text{ k}\Omega$
  - (D)  $\infty$  and  $\frac{20}{11} \text{ k}\Omega$

- Q79.**  $I_D$  and  $V_{DS}$  under DC conditions are respectively
- (A)  $5.625 \text{ mA}$  and  $8.75 \text{ V}$
  - (B)  $7.500 \text{ mA}$  and  $5.00 \text{ V}$

- (C)  $4.500 \text{ mA}$  and  $11.00 \text{ V}$
- (D)  $6.250 \text{ mA}$  and  $7.50 \text{ V}$

**Q80.** Transconductance in milli-Siemens (mS) and voltage gain of the amplifier are respectively

- (A)  $1.875 \text{ mS}$  and  $3.41$
- (B)  $1.875 \text{ mS}$  and  $-3.41$
- (C)  $3.3 \text{ mS}$  and  $-6$
- (D)  $3.3 \text{ mS}$  and  $6$

**Linked Answer Questions : Q.81a to 85b Carry Two Marks Each**

**Statement For Linked Answer Questions 81a and 81b:**

Consider an 8085 microprocessor system.

**81a.** The following program starts at location 0100H.

```
LXI SP, OOFF
LXI H, 0701
MVI A, 20H
SUB M
```

The content of accumulator when the program counter reaches 0109 H is

- (A) 20 H
- (B) 02 H
- (C) 00 H
- (D) FF H

**Q81b.** If in addition following code exists from 019H onwards,

```
ORI 40 H
ADD M
```

What will be the result in the accumulator after the last instruction is executed?

- (A) 40 H
- (B) 20 H
- (C) 60 H
- (D) 42 H

**Statement for Linked Answer Question 82a and 82b:**

The open loop transfer function of a unity feedback system is given by

**Q82a.** The gain and phase crossover frequencies in rad/sec are, respectively

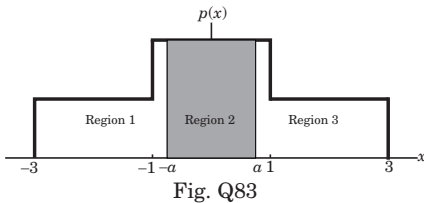
- (A) 0.632 and 1.26
- (B) 0.632 and 0.485
- (C) 0.485 and 0.632
- (D) 1.26 and 0.632

**Q82b.** Based on the above results, the gain and phase margins of the system will be

- (A) -7.09 dB and 87.5°
- (B) 7.09 dB and 87.5°
- (C) 7.09 dB and -87.5°
- (D) -7.09 and -87.5°

**Statement for linked answer question 83a and 83b**

Asymmetric three - level midtread quantizer is to be designed assuming equiprobable occurrence of all quantization levels.



**Q83a.** If the probability density function is divided into three regions as shown in the figure, the value of  $a$  in the figure is

- (A)  $\frac{1}{3}$
- (B)  $\frac{2}{3}$
- (C)  $\frac{1}{2}$
- (D)  $\frac{1}{4}$

**Q83b.** The quantization noise power for the quantization region between  $-a$  and  $+a$  in the figure is

- (A)  $\frac{4}{81}$
- (B)  $\frac{1}{9}$
- (C)  $\frac{5}{81}$
- (D)  $\frac{2}{81}$

**Statement of Linked Answer Questions 84a and 84b**

Voltage standing wave pattern in a lossless transmission line with characteristic impedance 50 and a resistive load is shown in the figure.

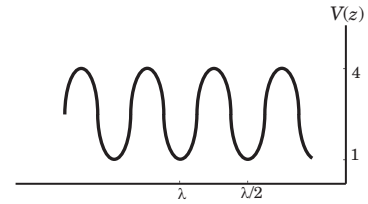


Fig. Q84

**Q84a.** The value of the load resistance is

- (A) 50  $\Omega$
- (B) 200  $\Omega$
- (C) 12.5  $\Omega$
- (D) 0

**Q84b.** The reflection coefficient is given by

- (A) -0.6
- (B) -1
- (C) 0.6
- (D) 0

**Statement of Linked Answer Question 85a and 85b:**

A sequence  $x(n)$  has non-zero values as shown in the figure.(A)

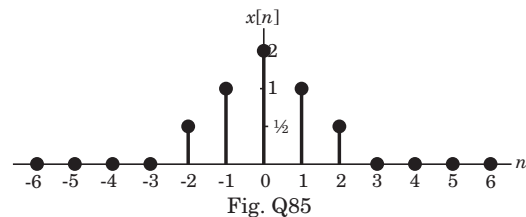
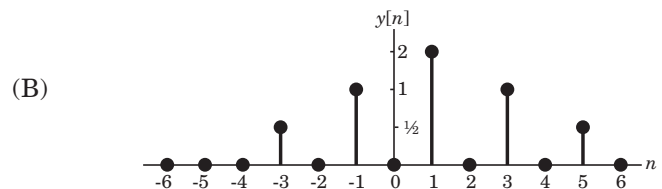
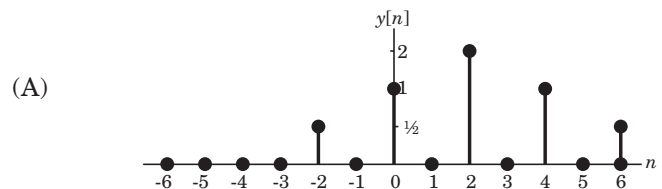
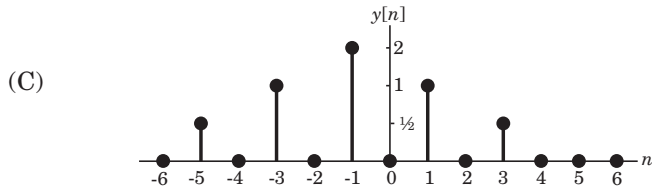
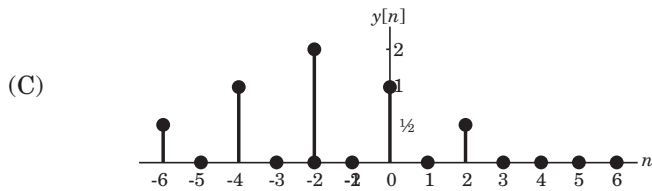


Fig. Q85

**Q85a.** The sequence

$$y[n] = \begin{cases} x\left(\frac{n}{2} - 1\right) & \text{for } n \text{ even} \\ 0 & \text{for } n \text{ odd} \end{cases} \text{ will be}$$





**Q85b.** The Fourier transform of  $y[2n]$  will be

- (A)  $e^{-2j\omega}[\cos 4\omega + 2 \cos 2\omega + 2]$
- (B)  $[\cos 2\omega + 2 \cos \omega + 2]$
- (C)  $e^{-j\omega}[\cos 2\omega + 2 \cos \omega + 2]$
- (D)  $e^{-2j\omega}[\cos 2\omega + 2 \cos \omega + 2]$

# ANSWERS

- 
- |          |          |          |          |          |
|----------|----------|----------|----------|----------|
| 1. (B)   | 2. (C)   | 3. (D)   | 4. (B)   | 5. (A)   |
| 6. (C)   | 7. (C)   | 8. (B)   | 9. (B)   | 10. (C)  |
| 11. (C)  | 12.(B)   | 13.(C)   | 14. (D)  | 15. (B)  |
| 16. (D)  | 17. (B)  | 18. (B)  | 19. (A)  | 20. (B)  |
| 21 (A)   | 22. (D)  | 23. (A)  | 24.(B)   | 25.(C)   |
| 26. (D)  | 27. (B)  | 28 (A)   | 29. (C)  | 30.(C)   |
| 31. (B)  | 32. (B)  | 33.(C)   | 34 (C)   | 35.(B)   |
| 36.(C)   | 37.(D)   | 38. (B)  | 39 (A)   | 40. (C)  |
| 41. (C)  | 42.(B)   | 43.(B)   | 44. (C)  | 45 (C)   |
| 46. (D). | 47. (A)  | 48.(B)   | 49.(C)   | 50. (D)  |
| 51. (B)  | 52 (A)   | 53. (C)  | 54.(C)   | 55.(B)   |
| 56. (B)  | 57. (C)  | 58 (C)   | 59.(B)   | 60.(C)   |
| 61. (D)  | 62. (B)  | 63 (A)   | 64. (C)  | 65. (C)  |
| 66. (B)  | 67.(B)   | 68. (C)  | 69 (C)   | 70. (D)  |
| 71. (A)  | 72.(B)   | 73.(C)   | 74. (D)  | 75. (B)  |
| 76. (A)  | 77. (C)  | 78. (C)  | 79. (B)  | 80. (B)  |
| 81a. (C) | 81b (C)  | 82 a.(B) | 82 b.(B) | 83 a.(C) |
| 83b. (D) | 84a. (B) | 84b5 (A) | 85a. (C) | 85b. (C) |

## MCQ GATE-ECE by RK Kanodia

Kindly note that our publication **GATE-ECE by RK Kanodia**, has the following features that make it an excellent study material in comparison to other books available on the GATE exam:

- 1. MCQs:** The book contains only solved Multiple choice questions (MCQ) which is the main requirement of the GATE exam. Each and every problem has its complete solution. **We understand that theoretical studies should be done from the standard book, that one has studied for the semester exams and thus one should use the same material to understand the concepts of the same.** We have deliberately excluded theoretical matter in the guide book so as not to mislead the students. However, wherever needed, satisfactory explanation of the formula has been included in the solution.
- 2. Adherence to Pattern:** All Multiple choice questions are strictly according to the GATE pattern. Every problem selected and included in the book is a model problem for the preparation of the exam which would thus prepare and equip the students better. Kindly note, that the standard of **Multiple choice questions and their solution in every unit is much better than the ones available in a famous series of problems & solutions as far as GATE is concerned.**
- 3. Levels of MCQs:** The Multiple choice questions included in this book are in a conceptually evolving method, allowing the student to progress from one level of complexity to another but always aiding in understanding the basic foundation of the subject. Thus, the MCQs gradually and scientifically advance from the basic level to a more complex level, helping in the systematic understanding of the problem rather than an abrupt one.
- 4. Unit Division:** Each unit has been further sub-divided into separate chapters and not clustered together. Thus the non-combination of all the problems in a single unit makes the reader, to remain focused and able to manage his time during his preparation.
- 5. Time Management:** Time is a very important factor in any competitive exam and the same applies for GATE too. It has been observed and concluded that if students can manage time, they can get a better score in GATE. **The solutions provided are extremely logical yet tricky** so that they save time when the student solve them in the examination, as they have already been used to solving difficult and tricky problems.
- 6. Variety:** The book carries in it a large variety of problems. The words of one of the senior educators of a reputed coaching institute bear testimony to the fact wherein he comments that **“We can’t expect so much variety of problems in a single book available in the market.”**
- 7. Includes Previous Exam Questions:** This **book contains questions on earlier IES, IAS & GATE exams that might be relevant to learn some concepts** but we have purposely not mentioned them in our book. We believe and strongly advocate that every year GATE contains new and unique problems.
- 8. Less Erroneous:** The book has very few errors [less than 5%] compared to the other books available in the market which have upto 40% errors. This puts the students in a better and more comfortable situation as all the **errors are traceable due to availability of the complete solution** and moreover, the errors are never conceptual but data or typo mistakes. Kindly note that, all the errata will be soon available at our website [www.nodia.co.in](http://www.nodia.co.in)
- 9. Attractive Format:** We understand student psychology and the fact that if the book is in an attractive format, the student would feel good in reading the book. This fact also heightens the interest to study in a student. Thus **the style of the book is so designed that it appeals to its readers**, yet is expressive and detailed.
- 10. Aim :** The aim of the book is to provide quality material, a fact which can easily be seen in books available for the preparation of IIT-JEE, AIEEE, CPMT & CAT, but till date never observed in the material available GATE preparation. In other words, we want to provide ELITE material but which is also economical.

<b>E</b>	<b>: Expressive</b>
<b>L</b>	<b>: Less Erroneous</b>
<b>I</b>	<b>: Individualistic</b>
<b>T</b>	<b>: Targeted approach</b>
<b>E</b>	<b>: Exhaustive content</b>

We have received feedback, which state that the book fulfills more than what is stated above and thus it has been a great success last year, on all aspects. Everyone who got through, due to this book, has given excellent feedback. Reviews can be read at our website [www.nodia.co.in](http://www.nodia.co.in).

However, nothing in the world can be achieved without the help of constructive criticism and thus we would be obliged if you can send across your feedback to make our book, a **GUIDE** in true sense of the word.

Feel free to mail or call at following for any enquiry about book:

**NODIA & COMPANY**

09350292376

[pk.goel@nodia.co.in](mailto:pk.goel@nodia.co.in)