

Duration : Three Hours Maximum Marks : 150

Q.1 to carry Q.20 one marks each and Q.21 to Q.85 carry two marks each.

Q.1 The rank of the matrix $\begin{bmatrix} 1 & 1 & 1 \\ 1 & -1 & 0 \\ 1 & 1 & 1 \end{bmatrix}$ is

- (A) 0 (B) 1
 (C) 2 (D) 3

Q.2 $\nabla \times \nabla \times \mathbf{P}$ Where \mathbf{P} is a vector, is equal to

- (A) $\mathbf{P} \times \nabla \times \mathbf{P} - \nabla^2 \mathbf{P}$ (B) $\nabla^2 \mathbf{P} + \nabla(\nabla \cdot \mathbf{P})$
 (C) $\nabla^2 \mathbf{P} + \nabla \times \mathbf{P}$ (D) $\nabla(\nabla \cdot \mathbf{P}) - \nabla^2 \mathbf{P}$

Q.3 $\iint (\nabla \times \mathbf{P}) \cdot d\mathbf{s}$ where \mathbf{P} is a vector, is equal to

- (A) $\oint \mathbf{P} \cdot d\mathbf{l}$ (B) $\oint \nabla \times \nabla \times \mathbf{P} \cdot d\mathbf{l}$
 (C) $\oint \nabla \times \mathbf{P} \cdot d\mathbf{l}$ (D) $\oint \nabla \cdot \mathbf{P} dv$

Q.4 A probability density function is of the form

$$p(x) = Ke^{-\alpha|x|}, x \in (-\infty, \infty)$$

The value of K is

- (A) 0.5 (B) 1
 (C) 0.5 (D) α

Q.5 A solution for the differential equation

$$x(t) + 2x(t) = \delta(t)$$

With initial condition $x(0^-) = 0$

- (A) $e^{-2t}u(t)$ (B) $e^{2t}u(t)$
 (C) $e^{-t}u(t)$ (D) $e^t u(t)$

Q.6 A low-pass filter having a frequency response $H(j\omega) = A(\omega)e^{j\phi(\omega)}$ does not produce any phase distortions if

- (A) $A(\omega) = C\omega^2, \phi(\omega) = k\omega^3$ (B) $A(\omega) = C\omega^2, \phi(\omega) = k\omega$
 (C) $A(\omega) = C\omega, \phi(\omega) = k\omega^2$ (D) $A(\omega) = C, \phi(\omega) = k\omega^{-1}$

Q.7 The values of voltage (V_D) across a tunnel-diode corresponding to peak and valley currents are V_p, V_D respectively. The range of tunnel-diode voltage for V_D which the slope of its $I - V_D$ characteristics is negative would be

- (A) $V_D < 0$ (B) $0 \leq V_D < V_p$
 (C) $V_p \leq V_D < V_v$ (D) $V_D \geq V_v$

Q.8 The concentration of minority carriers in an extrinsic semiconductor under equilibrium is

- (A) Directly proportional to the doping concentration
 (B) Inversely proportional to the doping concentration
 (C) Directly proportional to the intrinsic concentration
 (D) Inversely proportional to the intrinsic concentration

Q.9 Under low level injection assumption, the injected minority carrier current for an extrinsic semiconductor is essentially the

- (A) Diffusion current
 (B) Drift current
 (C) Recombination current
 (D) Induced current

Q.10 The phenomenon known as “Early Effect” in a bipolar transistor refers to a reduction of the effective base-width caused by

- (A) Electron – hole recombination at the base
 (B) The reverse biasing of the base – collector junction

- (C) The forward biasing of emitter-base junction
- (D) The early removal of stored base charge during saturation-to-cut off switching

Q.11 The input impedance (Z_i) and the output impedance (Z_o) of an ideal trans-conductance (voltage controlled current source) amplifier are

- (A) $Z_i = 0, Z_o = 0$ (B) $Z_i = 0, Z_o = \infty$
- (C) $Z_i = \infty, Z_o = 0$ (D) $Z_i = \infty, Z_o = \infty$

Q.12 An n-channel depletion MOSFET has following two points on its $I_D - V_{GS}$ curve:

- (i) $V_{GS} = 0$ at $I_D = 12$ mA and
- (ii) $V_{GS} = -6$ Volts at $I_D = 0$ mA

Which of the following Q – point will give the highest trans – conductance gain for small signals?

- (A) $V_{GS} = -6$ Volts (B) $V_{GS} = -3$ Volts
- (C) $V_{GS} = 0$ Volts (D) $V_{GS} = 3$ Volts

Q.13 The number of product terms in the minimized sum-of-product expression obtained through the following K – map is (where, “d” denotes don’t care states)

1	0	0	1
0	d	0	0
0	0	d	1
1	0	0	1

- (A) 2 (B) 3
- (C) 4 (D) 5

Q.14 Let $x(t) \leftrightarrow X(j\omega)$ be Fourier Transform pair. The Fourier Transform of the signal $x(5t - 3)$ in terms of $X(j\omega)$ is given as

- (A) $\frac{1}{5} e^{-\frac{j3\omega}{5}} X\left(\frac{j\omega}{5}\right)$ (B) $\frac{1}{5} e^{\frac{j3\omega}{5}} X\left(\frac{j\omega}{5}\right)$
- (C) $\frac{1}{5} e^{-j3\omega} X\left(\frac{j\omega}{5}\right)$ (D) $\frac{1}{5} e^{j3\omega} X\left(\frac{j\omega}{5}\right)$

Q.15 The Dirac delta function is defined as

- (A) $\delta(t) = \begin{cases} 1 & t = 0 \\ 0 & \text{otherwise} \end{cases}$

- (B) $\delta(t) = \begin{cases} 1 & t = 0 \\ 0 & \text{otherwise} \end{cases}$

- (C) $\delta(t) = \begin{cases} 1 & t = 0 \\ 0 & \text{otherwise} \end{cases}$ and $\int_{-\infty}^{\infty} \delta(t) dt = 1$

- (D) $\delta(t) = \begin{cases} \infty & t = 0 \\ 0 & \text{otherwise} \end{cases}$ and $\int_{-\infty}^{\infty} \delta(t) dt = 1$

Q.16 If the region of convergence of $x_1[n] + x_2[n]$ is $\frac{1}{3} < |z| < \frac{2}{3}$ then the region of convergence of $x_1[n] - x_2[n]$ includes

- (A) $\frac{1}{3} < |z| < 3$ (B) $\frac{2}{3} < |z| < 3$
- (C) $\frac{3}{2} < |z| < 3$ (D) $\frac{1}{3} < |z| < \frac{2}{3}$

Q.17 The open-loop function of a unity-gain feedback control system is given by

$$G(s) = \frac{K}{(s + 1)(s + 2)}$$

The gain margin of the system in dB is given by

- (A) 0 (B) 1
- (C) 20 (D)

Q.18 In the system shown below, $x(t) = (\sin t)u(t)$ In steady-state, the response $y(t)$ will be

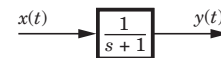


Fig Q. 18

- (A) $\frac{1}{\sqrt{2}} \sin\left(t - \frac{\pi}{4}\right)$ (B) $\frac{1}{\sqrt{2}} \sin\left(t + \frac{\pi}{4}\right)$
- (C) $\frac{1}{\sqrt{2}} e^{-t} \sin t$ (D) $\sin t - \cos t$

Q.19 The electric field of an electromagnetic wave propagation in the positive direction is given by

$$E = \hat{a}_x \sin(\omega t - \beta z) + \hat{a}_y \sin(\omega t - \beta z + \pi/2)$$

The wave is

- (A) Linearly polarized in the z–direction
- (B) Elliptically polarized
- (C) Left-hand circularly polarized
- (D) Right-hand circularly polarized

Q.20 A transmission line is feeding 1 watt of power to a horn antenna having a gain of 10 dB. The antenna is matched to the transmission line. The total power radiated by the horn antenna into the free – space is

- (A) 10 Watts
- (B) 1watt
- (C) 0.1 Watt
- (D) 0.01 Watt

Q.21 The eigenvalues and the corresponding eigenvectors of a 2 x 2 matrix are given by

Eigenvalue	Eigenvector
$\lambda_1 = 8$	$v_1 = \begin{bmatrix} 1 \\ 1 \end{bmatrix}$
$\lambda_2 = 8$	$v_2 = \begin{bmatrix} 1 \\ -1 \end{bmatrix}$

The matrix is

- (A) $\begin{bmatrix} 6 & 2 \\ 2 & 6 \end{bmatrix}$
- (B) $\begin{bmatrix} 4 & 6 \\ 6 & 4 \end{bmatrix}$
- (C) $\begin{bmatrix} 2 & 4 \\ 4 & 2 \end{bmatrix}$
- (D) $\begin{bmatrix} 4 & 8 \\ 8 & 4 \end{bmatrix}$

Q.22 For the function of a complex variable W (Where, $W = u + jv$ and $Z = x + jy$) the $u = \text{constant}$ lines get mapped in z - Plane as

- (A) Set of radial straight lines
- (B) Set of concentric circles
- (C) Set of confocal hyperbolas
- (D) Set of confocal ellipses

Q.23 The value of the contour integral

$$\oint_{|z|=2} \frac{1}{z^2 + 4}$$

in positive sense is

- (A) $\frac{j\pi}{2}$
- (B) $-\frac{\pi}{2}$
- (C) $-\frac{j\pi}{2}$
- (D) $\frac{\pi}{2}$

Q.24 The integral $\int_0^\pi \sin^3 \theta d\theta$ is given by

- (A) 1/2
- (B) 2/3
- (C) 4/3
- (D) 8/3

Q.25 Three companies X, Y and Z supply computers to a university. The percentage of computers supplied by them and the probability of those being defective are tabulated below

Company	% of computers supplied	Probability of being defective
X	60 %	0.01
Y	30 %	0.02
Z	10 %	0.03

Given that a computer is defective, the probability that it was supplied by Y is

- (A) 0.1
- (B) 0.2
- (C) 0.3
- (D) 0.4

Q.26 For the matrix $\begin{bmatrix} 4 & 2 \\ 2 & 4 \end{bmatrix}$ the eigenvalue corresponding to the eigenvector $\begin{bmatrix} 101 \\ 101 \end{bmatrix}$ is

- (A) 2
- (B) 4
- (C) 6
- (D) 8

Q.27 For the differential equation $\frac{d^2y}{dx^2} + k^2y = 0$ the boundary conditions are (i) $y = 0$ for $x = 0$ and (ii) $y = 0$ for $x = a$. The form of non-zero solutions of y (where m varies over all integers) are

- (A) $y = \sum_m A_m \sin \frac{m\pi x}{a}$
- (B) $y = \sum_m A_m \cos \frac{m\pi x}{a}$
- (C) $y = \sum_m A_m x^{\frac{m\pi}{a}}$
- (D) $y = \sum_m A_m x^{-\frac{m\pi}{a}}$

Q.28 Consider the function $f(t)$ having Laplace transform

$$F(s) = \frac{\omega_0}{s^2 + \omega_0^2} \quad \text{Re}[s] > 0$$

The final value of $f(t)$ would be

- (A) 0
- (B) 1
- (C) $-1 \leq f(\infty) \leq 1$
- (D) ∞

Q.29 As x is increased from $-\infty$ to ∞ the function

$$f(x) = \frac{e^x}{1 + e^x}$$

- (A) Monotonically increases
- (B) Monotonically decreases
- (C) Increases to a maximum value and then decreases
- (D) Decreases to a minimum value and then increases

Q.30 A two-port network is represented by ABCD, parameters given by

$$\begin{bmatrix} V_1 \\ I_1 \end{bmatrix} = \begin{bmatrix} A & B \\ C & D \end{bmatrix} \begin{bmatrix} V_2 \\ -I_2 \end{bmatrix}$$

If port - 2 is terminated by the input impedance seen at port - 1 is given by

- (A) $\frac{A + BR_L}{C + DR_L}$ (B) $\frac{AR_L + C}{BR_L + D}$
 (C) $\frac{DR_L + A}{C + BR_L}$ (D) $\frac{AR_L + B}{D + CR_L}$

Q.31 In the two port network shown in the figure below z_{12} and z_{21} are respectively

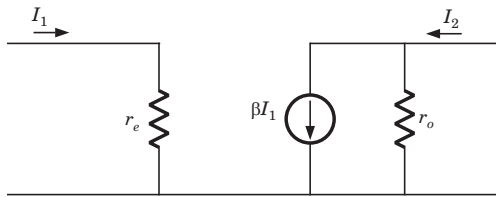


Fig Q.31

- (A) r_e and βr_o (B) 0 and $-\beta r_o$
 (C) 0 and βr_o (D) r_e and $-\beta r_o$

Q.32 The first and the last critical frequencies (singularities) of a driving point impedance function of a passive network having two kinds of elements, are a pole and a zero respectively. The above property will be satisfied by

- (A) RL network only
 (B) RC network only
 (C) LC network only
 (D) RC as well as RL networks

Q.33 A 2 mH inductor with some initial current can be represented as shown below, where s is the Laplace Transform variable. The value of initial current is

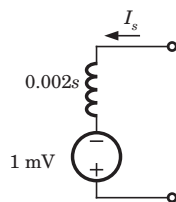


Fig Q.33

- (A) 0.5A (B) 2.0A
 (C) 1.0 A (D) 0.0 A

Q.34 In the figures shown below, assume that all the capacitors are initially uncharged. If $v_i(t) = 10u(t)$ Volts, $v_o(t)$ is given by

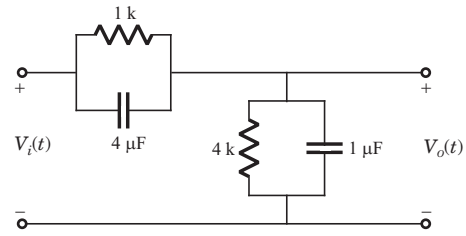


Fig. Q.34

- (A) $8e^{-0.004t}$ Volts (B) $8(1 - e^{-0.004t})$ Volts
 (C) $8u(t)$ Volts (D) 8 Volts

Q.35 Consider two transfer functions

$$G_1(s) = \frac{1}{s^2 + as + b} \text{ And } G_2(s) = \frac{s}{s^2 + as + b}$$

The 3-dB bandwidths of their frequency responses are, respectively

- (A) $\sqrt{a^2 - 4b}, \sqrt{a^2 + 4b}$ (B) $\sqrt{a^2 + 4b}, \sqrt{a^2 - 4b}$
 (C) $\sqrt{a^2 - 4b}, \sqrt{a^2 - 4b}$ (D) $\sqrt{a^2 + 4b}, \sqrt{a^2 + 4b}$

Q.36 A negative resistance R_{neg} is connected to a passive network N having driving point impedance $Z_1(s)$ as shown below. For $Z_2(s)$ to be positive real,

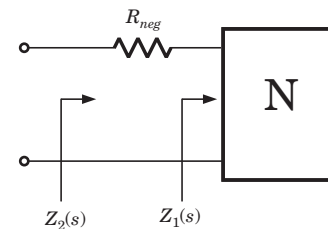


Fig Q.36

- (A) $|R_{neg}| \leq \text{Re } Z_1(j\omega), \forall \omega$ (B) $|R_{neg}| \leq |Z_1(j\omega)|, \forall \omega$
 (C) $|R_{neg}| \leq \text{Im } Z_1(j\omega), \forall \omega$ (D) $|R_{neg}| \leq \angle Z_1(j\omega), \forall \omega$

Q.37 In the circuit shown below, the switch was connected to position 1 at $t < 0$ and at $t = 0$, it is changed to position 2. Assume that the diode has zero voltage drop and a storage time t_s . For $0 < t \leq t_s$, v_R is given by (all in Volts)

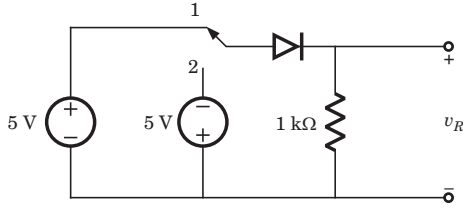


Fig Q.37

- (A) $v_R = -5$
- (B) $v_R = +5$
- (C) $0 \leq v_R < 5$
- (D) $-5 \leq v_R < 0$

Q.38 The majority carriers in an n-type semiconductor have an average drift velocity v in a direction perpendicular to a uniform magnetic field B . The electric field E induced due to Hall effect acts in the direction.

- (A) $v \times B$
- (B) $B \times v$
- (C) along v
- (D) opposite to v

Q.39 Find the correct match between Group 1 and Group 2.

Group 1

Group 2

- | | |
|------------------|---------------------------------|
| E-Varactor diode | 1-Voltage reference |
| F-PIN diode | 2-High frequency switch |
| G-Zener diode | 3-Tuned circuits |
| H-Schottky diode | 4-Current controlled attenuator |
- (A) E-4, F-2, G-1, H-3
 - (B) E-2, F-4, G-1, H-3
 - (C) E-3, F-4, G-1, H-2
 - (D) E-1, F-3, G-2, H-4

Q.40 A heavily doped n- type semiconductor has the following data:

Hole-electron ratio	:0.4
Doping concentration	: 4.2×10^8 atoms/m ³
Intrinsic concentration	: 1.5×10^4 atoms/m ³

The ratio of conductance of the n-type semiconductor to that of the intrinsic semiconductor of same material and at same temperature is given by

- (A) 0.00005
- (B) 2,000
- (C) 10,000
- (D) 20,000

Q.41 For the circuit shown in the following figure, the capacitor C is initially uncharged. At $t=0$ the switch S is closed. In the figures shown the OP AMP is supplied with and the ground has been shown by the symbol

The voltage V_C across the capacitor at $t=1$ is

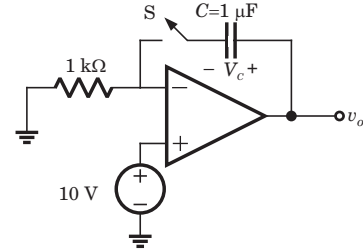


Fig Q.41

- (A) 0 Volt
- (B) 6.3 Volts
- (C) 9.45 Volts
- (D) 10 Volts

Q. 42 For the circuit shown below, assume that the zener diode is ideal with a breakdown voltage of 6 volts. The waveform observed across R is

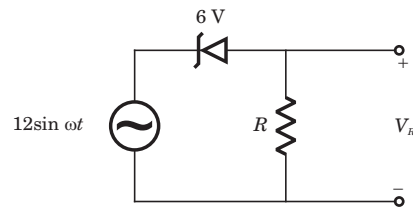


Fig Q.42

- (A)
- (B)
- (C)
- (D)

Q. 43 A new Binary Coded Pentary (BCP) number system is proposed in which every digit of a base-5 number is represented by its corresponding 3-bit binary code. For example, the base-5 number 24 will

be represented by its BCP code 010100. In this numbering system, the BCP code 10001001101 corresponds of the following number is base-5 system
 (A) 423 (B) 1324
 (C) 2201 (D) 4231

Q.44 An I / O peripheral device shown in Fig.(b) below is to be interfaced to an 8085 microprocessor. To select the I/O device in the I/O address range D4 H – D7 H, its chip-select (\overline{CS}) should be connected to the output of the decoder shown in as below:

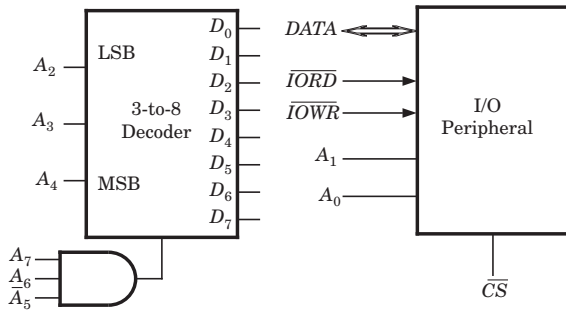


Fig Q.44

- (A) output 7
- (B) output 5
- (C) output 2
- (D) output 0

Q.45 For the circuit shown in figures below, two 4 – bit parallel – in serial – out shift registers loaded with the data shown are used to feed the data to a full adder. Initially, all the flip – flops are in clear state. After applying two clock pulses, the outputs of the full-adder should be

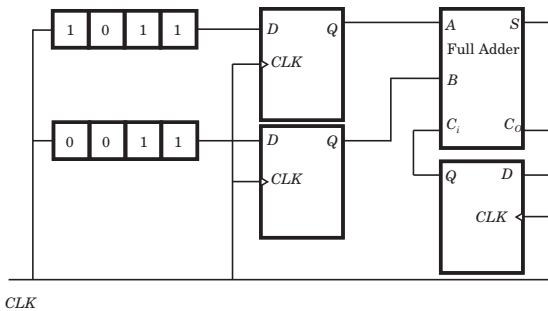


Fig Q.45

- (A) $S = 0$ $C_0 = 0$
- (B) $S = 0$ $C_0 = 1$
- (C) $S = 1$ $C_0 = 0$
- (D) $S = 1$ $C_0 = 1$

Q.46 A 4 – bit D / A converter is connected to a free – running 3 – big UP counter, as shown in the following figure. Which of the following waveforms will be observed at V_o ?

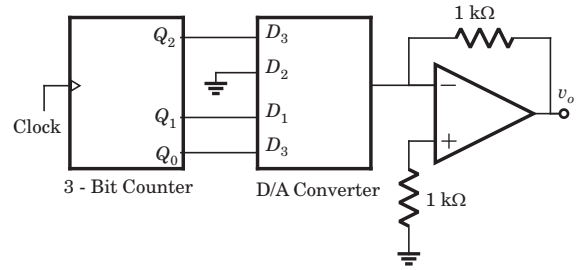
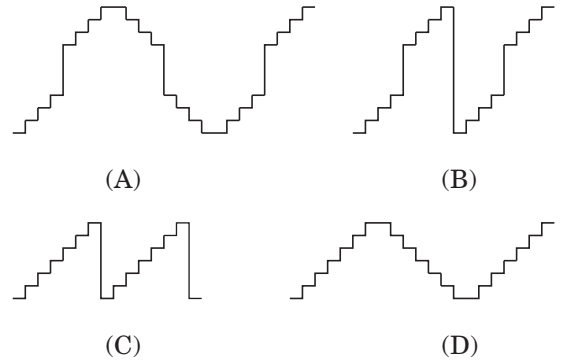


Fig Q.46



Q.47 Two D – flip – flops, as shown below, are to be connected as a synchronous counter that goes through the following sequence

00 → 01 → 11 → 10 → 00 → ...

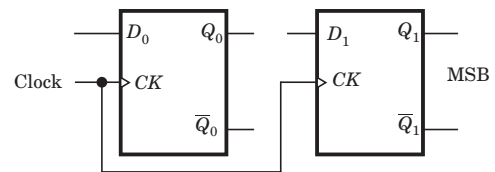


Fig Q.47

The inputs D_0 and D_1 respectively should be connected as,

- (A) $\overline{Q_1}$ and Q_0
- (B) $\overline{Q_0}$ and Q_1
- (C) $\overline{Q_1}Q_0$ and $\overline{Q_1}Q_0$
- (D) $\overline{Q_1} \overline{Q_0}$ and Q_1Q_0

Q.48 Following is the segment of a 8085 assembly language program

```

LXI SP, EFFF H
CALL 3000 H
:
:
:
3000 H LXI H, 3CF4
        PUSH PSW
        SPHL
        POP PSW
        RET
    
```

On completion of RET execution, the contents of SP is

- (A) 3CF0 H
- (B) 3CF8 H
- (C) EFFD H
- (D) EFFF H

Q.49 The point P in the following figure is stuck at 1. The output f will be

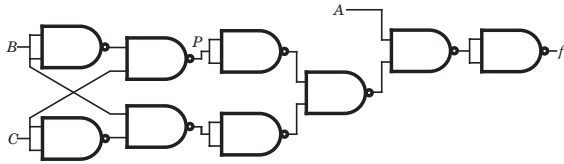


Fig Q.49

- (A) \overline{ABC}
- (B) \overline{A}
- (C) $AB\overline{C}$
- (D) A

Q.50 A signal with bandwidth 500 Hz is first multiplied by a signal $g(t)$ where

$$g(t) = \sum_{R=-\infty}^{\infty} (-1)^k \delta(t - 0.5 \times 10^{-4} k)$$

The resulting signal is then passed through an ideal lowpass filter with bandwidth 1 kHz. The output of the lowpass filter would be

- (A) $\delta(t)$
- (B) $m(t)$
- (C) 0
- (D) $m(t)\delta(t)$

Q.51 The minimum sampling frequency (in samples / sec) required to reconstruct the following signal from its samples without distortion

$$x(t) = 5 \left(\frac{\sin 2\pi 100t}{\pi t} \right)^3 + 7 \left(\frac{\sin 2\pi 100t}{\pi t} \right)^2$$

Would be

- (A) 2×10^3
- (B) 4×10^3
- (C) 6×10^3
- (D) 8×10^3

Q.52 A uniformly distributed random variable X with probability density function

$$f_x(x) = \frac{1}{10} (u(x+5) - u(x-5))$$

Where $u(\cdot)$ is the unit step function is passed through a transformation given in the figure below. The probability density function of the transformed random variable Y would be

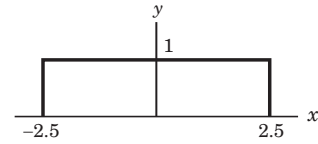


Fig Q.52

- (A) $f_y(y) = \frac{1}{5} (u(y+2.5) - u(y-2.5))$
- (B) $f_y(y) = 0.5\delta(y) + 0.5\delta(y-1)$
- (C) $f_y(y) = 0.25\delta(y+2.5) + 0.25\delta(y-2.5) + 5\delta(y)$
- (D) $f_y(y) = 0.25\delta(y+2.5) + 0.25\delta(y-2.5) + \frac{1}{10} (u(y+2.5) - u(y-2.5))$

Q. 53 A system with input $x[n]$ and output $y[n]$ is given as

$$y[n] = \left(\sin \frac{5}{6} \pi n \right) x[n]$$

The system is

- (A) linear, stable and invertible
- (B) non-linear, stable and non-invertible
- (C) linear, stable and non-invertible
- (D) linear, unstable and invertible

Q.54 The unit step response of a system starting from rest is given by

$$c(t) = 1 - e^{-2t} \text{ For } t \geq 0$$

The transfer function of the system is

- (A) $\frac{1}{1+2s}$
- (B) $\frac{2}{2+s}$
- (C) $\frac{1}{2+s}$
- (D) $\frac{2s}{1+2s}$

Q.55 The Nyquist plot of $G(j\omega)H(j\omega)$ for a closed loop control system, passes through $(-1, j0)$ point in the GH plane. The gain margin of the system in dB is equal to

- (A) infinite
- (B) greater than zero
- (C) less than zero
- (D) zero

Q.56 The positive values of “K” and “a” so that the system shown in the figures below oscillates at a frequency of 2 rad/sec respectively are

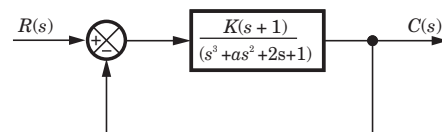


Fig Q.56

Q.66 A medium of relative permittivity $\epsilon_{r2} = 2$ forms an interface with free – space. A point source of electromagnetic energy is located in the medium at a depth of 1 meter from the interface. Due to the total internal reflection, the transmitted beam has a circular cross-section over the interface. The area of the beam cross-section at the interface is given by

- (A) $2\pi \text{ m}^2$
- (B) $\pi^2 \text{ m}^2$
- (C) $\frac{\pi}{2} \text{ m}^2$
- (D) $\pi \text{ m}^2$

Q.67 A medium is divide into regions I and II about $x=0$ plane, as shown in the figure below. An electromagnetic wave with electric field $E_1 = 4\hat{a}_x + 3\hat{a}_y + 5\hat{a}_z$ is incident normally on the interface from region I. The electric file E_2 in region II at the interface is

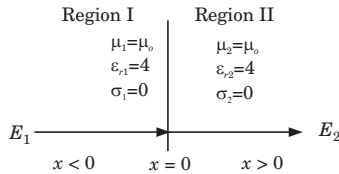


Fig Q.67

- (A) $E_2 = E_1$
- (B) $4\hat{a}_x + 0.75\hat{a}_y - 1.25\hat{a}_z$
- (C) $3\hat{a}_x + 3\hat{a}_y + 5\hat{a}_z$
- (D) $-3\hat{a}_x + 3\hat{a}_y + 5\hat{a}_z$

Q.68 When a planes wave traveling in free-space is incident normally on a medium having the fraction of power transmitted into the medium is given by

- (A) 8/9
- (B) 1/2
- (C) 1/3
- (D) 5/6

Q.69 A rectangular wave guide having TE_{10} mode as dominant mode is having a cut off frequency 18-GHz for the mode TE_{30} . The inner broad – wall dimension of the rectangular wave guide is

- (A) 5/3cms
- (B) 5 cms
- (C) 5/2 cms
- (D) 10 cms

Q.70 A mast antenna consisting of a 50 meter long vertical conductor operates over a perfectly conducting ground plane. It is base-fed at a frequency of 600 kHz. The radiation resistance of the antenna in Ohms is

- (A) $\frac{2\pi^2}{5}$
- (B) $\frac{\pi^2}{5}$
- (C) $\frac{4\pi^2}{5}$
- (D) $20\pi^2$

Common Data for Question 71,72,73:

In the transistor amplifier circuit show in the figure below, the transistor has the following parameters:

$$\beta_{DC} = 60, V_{BE} = 0.7 \text{ V}, h_{ie} \rightarrow \infty, h_{fe} \rightarrow \infty$$

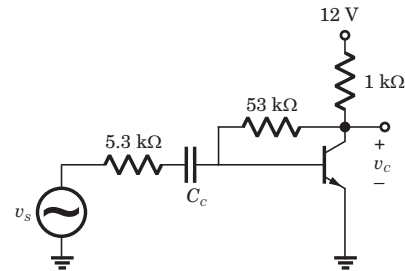


Fig Q.70

The capacitance can be assumed to be infinite.

Q.71 Under the DC conditions, the collector – to-emitter voltage drop is

- (A) 4.8 Volts
- (B) 5.3 Volts
- (C) 6.0 Volts
- (D) 6.6 Volts

Q.72 If β_{DC} is increase by 10%, the collector – to-emitter voltage drop

- (A) increases by less than or equal to 10%
- (B) decreases by less than or equal to 10%
- (C) increases by more than 10%
- (D) decreases by more than 10%

Q.73 The small signal gain of the amplifier v_c/v_s is

- (A) 10
- (B) -5.3
- (C) 5.3
- (D) 10

Common Data for Question 74, 75 :

Let $g(t) = p(t) * p(t)$ where * denotes convolution and $p(t) = u(t) - u(t - 1)$ with $u(t)$ being the unit step function.

Q.74 The impulse response of filter matched to the signal $s(t) = g(t) - \delta(t - 2) * g(t)$ is given as:

- (A) $s(1 - t)$
- (B) $-s(1 - t)$
- (C) $-s(t)$
- (D) $s(t)$

Q.75 An Amplitude Modulated signal is given as

$$x_{AM} = 100(p(t) + 0.5g(t)) \cos \omega_c t$$

In the interval. One set of possible values of the modulating signal and modulation index would be

- (A) $t, 0.5$
- (B) $t, 1.0$
- (C) $t, 2.0$
- (D) $t^2, 0.5$

Linked Answer Question : Q.75 to Q.85 carry two marks each.

Statement of Linked Answer Question 76 & 77:

A regulated power supply, shown in figure below, has an unregulated input (UR) of 15 volts and generates a regulated output Use the component values shown in the figure.

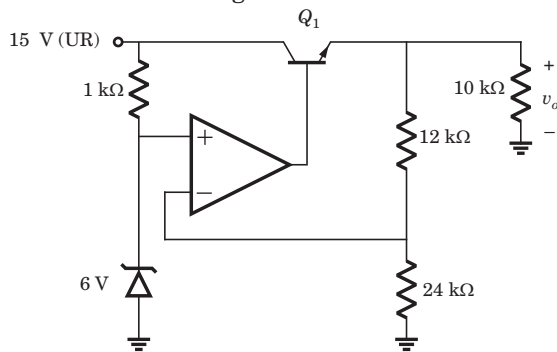


Fig Q.76

Q.76 The power dissipation across the transistor Q_1 shown in the figure is

- (A) 4.8 Watts
- (B) 5.0 Watts
- (C) 5.4 Watts
- (D) 6.0 Watts

Q.77 If the unregulated voltage increases by 20%, the power dissipation across the transistor Q_1

- (A) increase by 20%
- (B) increase by 50%
- (C) remains unchanged
- (D) decreases by 20%

Statement for Linked Answer Question 78 & 79;

The following two questions refer to wide sense stationary stochastic processes.

Q.78 It is desired to generate a stochastic process (as voltage process) with power spectral density

$$S(\omega) = \frac{16}{16 + \omega^2}$$

By driving a Linear – Time – Invariant system by zero mean white noise (as voltage process) with power spectral density being constant equal to 1. The system which can perform the desired task could be

- (A) first order lowpass R – L filter

(B) first order highpass R – C filter

(C) tuned L – C filter

(D) series R – L – C filter

Q.79 The parameters of the system obtained in Q. 78 would be

(A) first order R–L lowpass filter would have $R = 4 \Omega$ $L = 4$ H

(B) first order R–C highpass filter would have $R = 4 \Omega$ $C = 0.25$ F

(C) tuned L–C filter would have $L = 4$ H $C = 4$ F

(D) series R–L–C lowpass filter would have $R = 1 \Omega$, $L = 4$ H, $C = 4$ F

Statement for linked Answer Question 80 & 81

Consider the following Amplitude Modulated (AM) signal, where $f_m < B$

$$x_{AM}(t) = 10(1 + 0.5 \sin 2\pi f_m t) \cos 2\pi f_c t$$

Q.80 The average side-band power for the AM signal given above is

- (A) 25
- (B) 12.5
- (C) 6.25
- (D) 3.125

Q.81 The AM signal gets added to a noise with Power spectral Density given in the figure below. The ratio of average sideband power to mean noise power would be.

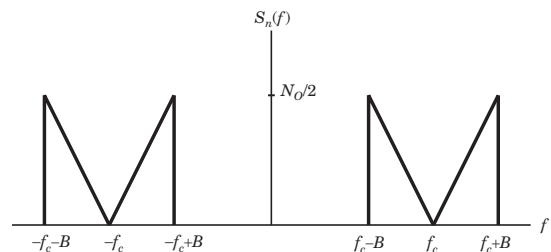


Fig Q.80

- (A) $\frac{25}{8N_0B}$
- (B) $\frac{25}{4N_0B}$
- (C) $\frac{25}{2N_0B}$
- (D) $\frac{25}{N_0B}$

Statement for Linked Answer Questions 82 & 83

Consider a unity- gain feedback control system whose open – leep transfer function is:

$$G(s) = \frac{as + 1}{s^2}$$

Q.82 The value of “ a ” so that the system has a phase – margin equal to $\pi/4$ is approximately equal to

- (A) 2.40 (B) 1.40
(C) 0.84 (D) 0.74

Q.83 With the value of “ a ” set for a phase – margin of $\pi/4$, the value of unit – impulse response of the open-loop system at $t = 1$ second is equal to

- (A) 3.40 (B) 2.40
(C) 1.84 (D) 1.74

Statement for Linked Answer Questions 84 & 85:

A 30 Volts battery with zero source resistance is connected to a coaxial line of characteristic impedance of 50 Ohms at $t = 0$ second and terminated in an unknown resistive load. The line length is such that it take 400 μs for an electromagnetic wave to travel from source end to load end and vice – versa. At $t = 400 \mu\text{s}$, the voltage at the load end is found to be 40 volts.

Q.84 The load resistance is

- (A) 25 Ohms (B) 50 Ohms
(C) 75 Ohms (D) 100 Ohms

Q.85 The steady state current through the load resistance is

- (A) 1.2 Amps (B) 0.3 Amps
(C) 0.6 Amps (D) 0.4 Amps

Answer

-
- | | | | | |
|-------|-------|-------|-------|-------|
| 1. C | 2. D | 3. A | 4. C | 5. A |
| 6. B | 7. C | 8. B | 9. A | 10. B |
| 11. D | 12. D | 13. A | 14. A | 15. D |
| 16. D | 17. D | 18. A | 19. C | 20. A |
| 21. A | 22. B | 23. D | 24. C | 25. D |
| 26. C | 27. A | 28. C | 29. A | 30. D |

- | | | | | |
|-------|-------|-------|-------|-------|
| 31. B | 32. B | 33. A | 34. B | 35. B |
| 36. B | 37. D | 38. A | 39. C | 40. D |
| 41. D | 42. B | 43. D | 44. B | 45. D |
| 46. B | 47. A | 48. B | 49. D | 50. B |
| 51. C | 52. B | 53. C | 54. B | 55. D |
| 56. B | 57. C | 58. D | 59. A | 60. B |
| 61. B | 62. B | 63. D | 64. C | 65. B |
| 66. D | 67. C | 68. A | 69. C | 70. A |
| 71. C | 72. B | 73. A | 74. D | 75. A |
| 76. C | 77. B | 78. A | 79. | 80. C |
| 81. B | 82. C | 83. C | 84. | 85. |

MCQ GATE-ECE by RK Kanodia

Kindly note that our publication **GATE-ECE by RK Kanodia**, has the following features that make it an excellent study material in comparison to other books available on the GATE exam:

- 1. MCQs:** The book contains only solved Multiple choice questions (MCQ) which is the main requirement of the GATE exam. Each and every problem has its complete solution. **We understand that theoretical studies should be done from the standard book, that one has studied for the semester exams and thus one should use the same material to understand the concepts of the same.** We have deliberately excluded theoretical matter in the guide book so as not to mislead the students. However, wherever needed, satisfactory explanation of the formula has been included in the solution.
- 2. Adherence to Pattern:** All Multiple choice questions are strictly according to the GATE pattern. Every problem selected and included in the book is a model problem for the preparation of the exam which would thus prepare and equip the students better. Kindly note, that the standard of **Multiple choice questions and their solution in every unit is much better than the ones available in a famous series of problems & solutions as far as GATE is concerned.**
- 3. Levels of MCQs:** The Multiple choice questions included in this book are in a conceptually evolving method, allowing the student to progress from one level of complexity to another but always aiding in understanding the basic foundation of the subject. Thus, the MCQs gradually and scientifically advance from the basic level to a more complex level, helping in the systematic understanding of the problem rather than an abrupt one.
- 4. Unit Division:** Each unit has been further sub-divided into separate chapters and not clustered together. Thus the non-combination of all the problems in a single unit makes the reader, to remain focused and able to manage his time during his preparation.
- 5. Time Management:** Time is a very important factor in any competitive exam and the same applies for GATE too. It has been observed and concluded that if students can manage time, they can get a better score in GATE. **The solutions provided are extremely logical yet tricky** so that they save time when the student solve them in the examination, as they have already been used to solving difficult and tricky problems.
- 6. Variety:** The book carries in it a large variety of problems. The words of one of the senior educators of a reputed coaching institute bear testimony to the fact wherein he comments that **“We can’t expect so much variety of problems in a single book available in the market.”**
- 7. Includes Previous Exam Questions:** This **book contains questions on earlier IES, IAS & GATE exams that might be relevant to learn some concepts** but we have purposely not mentioned them in our book. We believe and strongly advocate that every year GATE contains new and unique problems.
- 8. Less Erroneous:** The book has very few errors [less than 5%] compared to the other books available in the market which have upto 40% errors. This puts the students in a better and more comfortable situation as all the **errors are traceable due to availability of the complete solution** and moreover, the errors are never conceptual but data or typo mistakes. Kindly note that, all the errata will be soon available at our website www.nodia.co.in
- 9. Attractive Format:** We understand student psychology and the fact that if the book is in an attractive format, the student would feel good in reading the book. This fact also heightens the interest to study in a student. Thus **the style of the book is so designed that it appeals to its readers**, yet is expressive and detailed.
- 10. Aim :** The aim of the book is to provide quality material, a fact which can easily be seen in books available for the preparation of IIT-JEE, AIEEE, CPMT & CAT, but till date never observed in the material available GATE preparation. In other words, we want to provide ELITE material but which is also economical.

E	: Expressive
L	: Less Erroneous
I	: Individualistic
T	: Targeted approach
E	: Exhaustive content

We have received feedback, which state that the book fulfills more than what is stated above and thus it has been a great success last year, on all aspects. Everyone who got through, due to this book, has given excellent feedback. Reviews can be read at our website www.nodia.co.in.

However, nothing in the world can be achieved without the help of constructive criticism and thus we would be obliged if you can send across your feedback to make our book, a **GUIDE** in true sense of the word.

Feel free to mail or call at following for any enquiry about book:

NODIA & COMPANY

09350292376

pk.goel@nodia.co.in